



Creswick Walk, Hampstead Garden Suburb, NW11

Freehold

£775,000



800 finchley road, hampstead garden suburb, london, nw11 7tj

telephone 020 8458 5000 facsimile 020 8209 2068

email sales@litchfields.com web litchfields.com

offices also in highgate

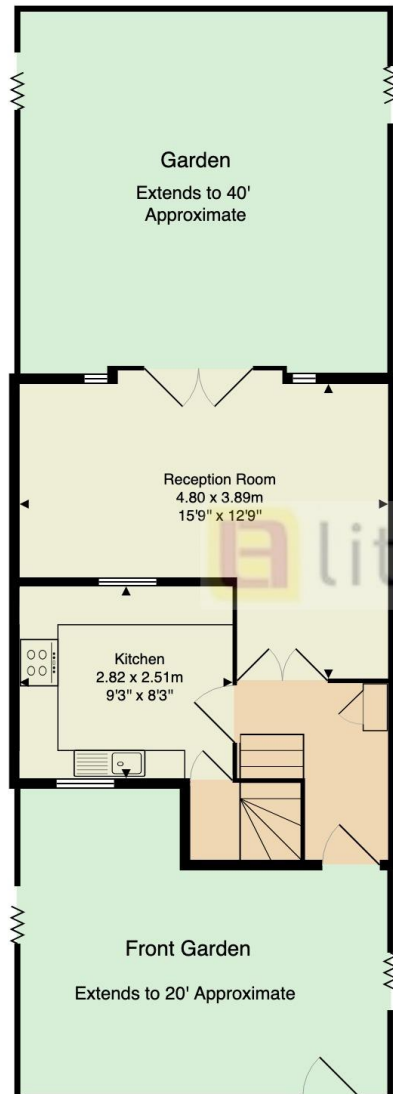
Offered in excellent decorative condition throughout with double glazed windows and doors and wood effect floors! A character and lovely Three bedroom link terraced cottage placed in the top corner of this quiet close 5 minutes walk to Temple Fortune shops, restaurants, cafes and bus routes. entrance hall, reception room, fully integrated modern kitchen, master bedroom with full range of fitted wardrobes, double bedroom and single bedrooms. There is a well appointed modern bathroom with utility cupboard housing a washing machine and tumble dryer stack up. Rear south facing garden with patio area.

Three Bedroom Link Terraced Cottage | Very good condition throughout | Double Glazed Windows & Doors | Wood Floors | Reception | Fully Fitted Modern Kitchen | Modern Bathroom | 5 Minutes Walk to Temple Fortune High Street & Busses | Very Large Rear Garden & Patio | EPC=D





Creswick Walk NW11



Approx. Gross Internal Area: 71.5 m² ... 769 ft² (excluding garden, front garden)

All measurements and areas are approximate only.
Dimensions are not to scale. This plan is for guidance only and must not be relied upon as a statement of fact.

Whilst every effort is made to ensure these details are accurate, all measurements given are approximate and for guidance only. We are unable to comment on the structure of the building or services and any investigations should be carried out by a qualified surveyor. We strongly advise you to ensure that all legal aspects are fully investigated by your solicitor prior to a purchase. We have not applied tests to any appliances or equipment and therefore cannot verify these are in good working order. We understand from the vendor that the fixtures and fittings listed are to be included in the sale price but these may be subject to negotiation.